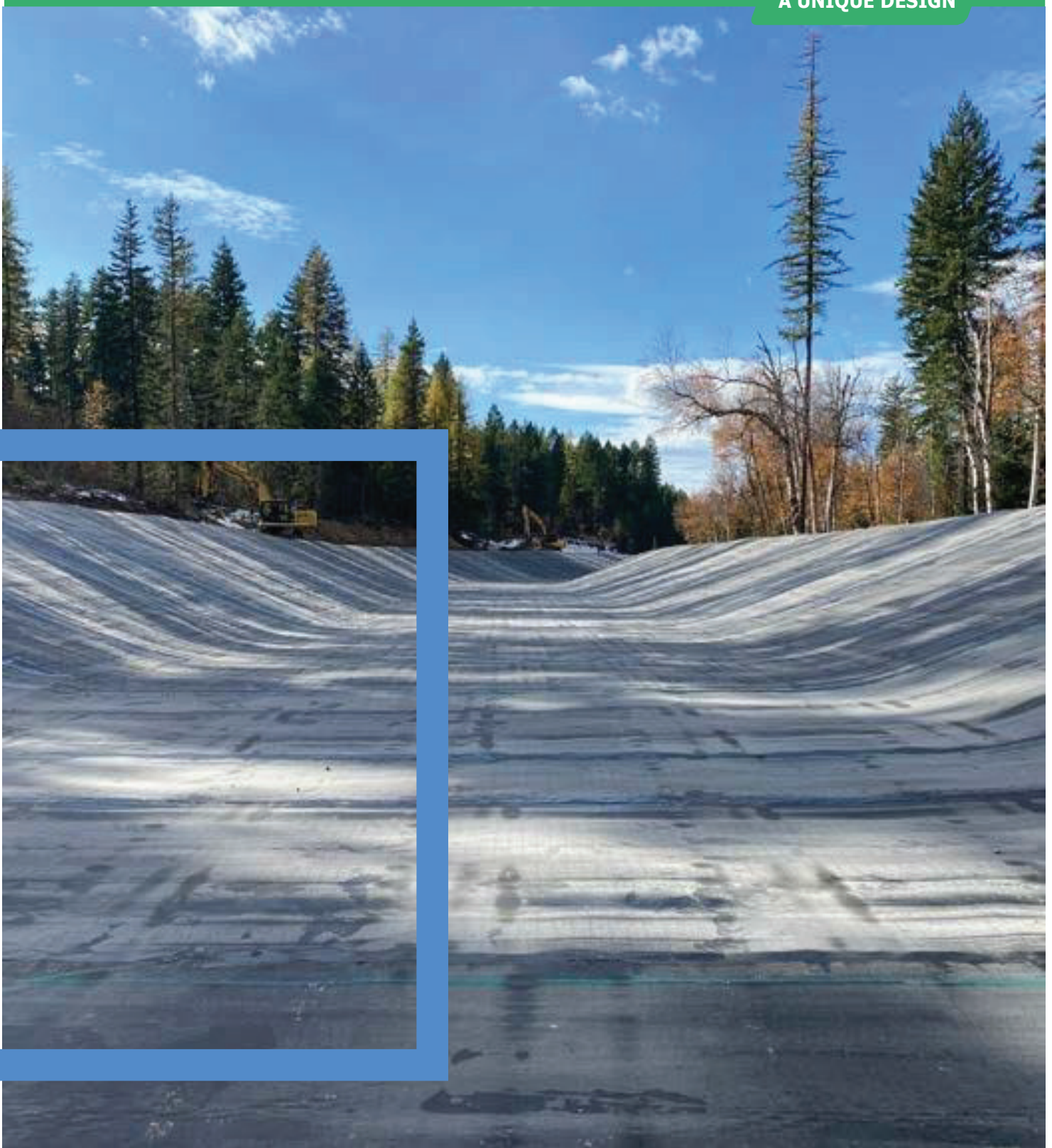


A UNIQUE DESIGN



ENVIRONMENT

HYDRAULICS

MINING

COMPANY INTRODUCTION

Yooil Infrastructure Pvt. Ltd is an emerging company with advanced **Korean Technology** in the domain of water management and environmental protection solutions. Yooil was incorporated in April 2018. The Company offers Water management and conservation solutions for the first time in India with its unique solutions like Air-filled rubber dams, Bituminous Geo Membrane (BGM), Water tank system and Pocket Dams. All these solutions are simple in design, faster in construction, cost effective, environmentally friendly, and economical.



Why BGM ?

- ✦ Excellent puncture resistant
- ✦ High tensile strength
- ✦ Excellent UV resistant
- ✦ Suitable for drinking water
- ✦ Longer life
- ✦ High resistant to weed growth.
- ✦ Impermeable
- ✦ Suitable for extreme weather
- ✦ Faster & easy installation
- ✦ Thickest & heaviest membrane

TECHNICAL VALIDATION

These waterproofing systems are implemented in compliance with local regulations and reference systems. For example: CETU technical approval and ASQUAL certification in France.

Additional internal specifications can also be implemented. Please contact your local representative for more details



BITUMINOUS GEO MEMBRANE

A UNIQUE DESIGN

Bituminous geomembrane is a waterproofing system, unique in terms of its 5.10m width. It is associated with an elastomeric bitumen based binder and an internal structure made from non-woven polyester geotextile; it is designed to guarantee excellent mechanical and chemical resistance over the long term.

ADVANTAGES FOR ALL SITUATIONS



RESISTANCE TO AGGRESSIVE ENVIRONMENTS

even without adding an anti-puncture geotextile



COMPATIBLE WITH ALL SUBGRADES AND COVERING MATERIALS

(hot-mix asphalt, concrete, stone, gravel)



EXCELLENT RESISTANCE TO AGEING

Resistance to UV, weathering, biological agents and oxidation



SUITABLE EVEN FOR EXTREME WEATHER CONDITIONS

(rain, wind, cold to -40°C)



REMARKABLE DIMENSIONAL STABILITY AND FLEXIBILITY

Guaranteeing permanent contact with the supporting ground

PEELABLE PROTECTIVE STRIP FOR WELDING

BOTTOMSIDE: ANTI-ROOT PERFORATION FILM

UPPER SIDE: SANDED

OVERLAP LINE FOR WELDING

ROLL WIDTH 5,10 M

ENVIRONMENT

Compatible with today's industrial and domestic activities, BGM is ideal for a wide range of environmental protection applications. It is particularly recommended for industrial and mining structures.



CONTAINMENT OF SOLID WASTE

Waste from domestic, mining and industrial activities, green waste

BGM is widely used for the following purposes:

- ✓ waterproofing and isolation of bottom ash maturation areas, composting areas and ore extraction sites,
- ✓ containment of storage centres for contaminated industrial waste (chromates, potash, etc.) and landfill sites,
- ✓ covering slag heaps after activity to prevent the spreading of pollution via rainwater and contamination of rivers and the water table,
- ✓ protecting and preserving water resources and soils against pollution of all kinds.



CONTAINMENT OF LIQUID WASTE

Waste water, liquid waste from industrial and mining operations, tailings pond

Watertight construction design for retention of polluted waters has increased substantially in recent years.

Coletanche geomembranes have a high level of resistance to biological and chemical agents and offer an environmentally friendly solution to a wide range of pollutants.



SOLID WASTE CAPPING

The use of BGM in the case of storage piles or capping of plastic wastes is done to prevent the loss of heavy mineral concentrate and also helps to prevent environmental damage from wind dispersal.

HYDRAULICS

Water is our most precious resource, this is why we have developed BGM to meet the increasing needs of the industry, offering the possibility of installing the geomembrane for hydraulic transport and storage systems.



DAMS

Flood mitigation, irrigation, industry, hydroelectricity

BGM is used for new build and renovation projects concerning the upstream construction facings of dams: Ospedale dam, Galaube dam, El Mauro dam, etc. It is particularly well-suited for the waterproofing of slight gradient earth-filled dams.



CANALS

Irrigation, navigation, and Power canals

Used on its own or combined with mechanical protection systems made from concrete, gabion or rock, BGM is an effective solution for the waterproofing of all kinds of irrigation canals, hydroelectric power plant supply pipes and waterways. It is also recommended for the construction of drainage trenches and repairing leaks.

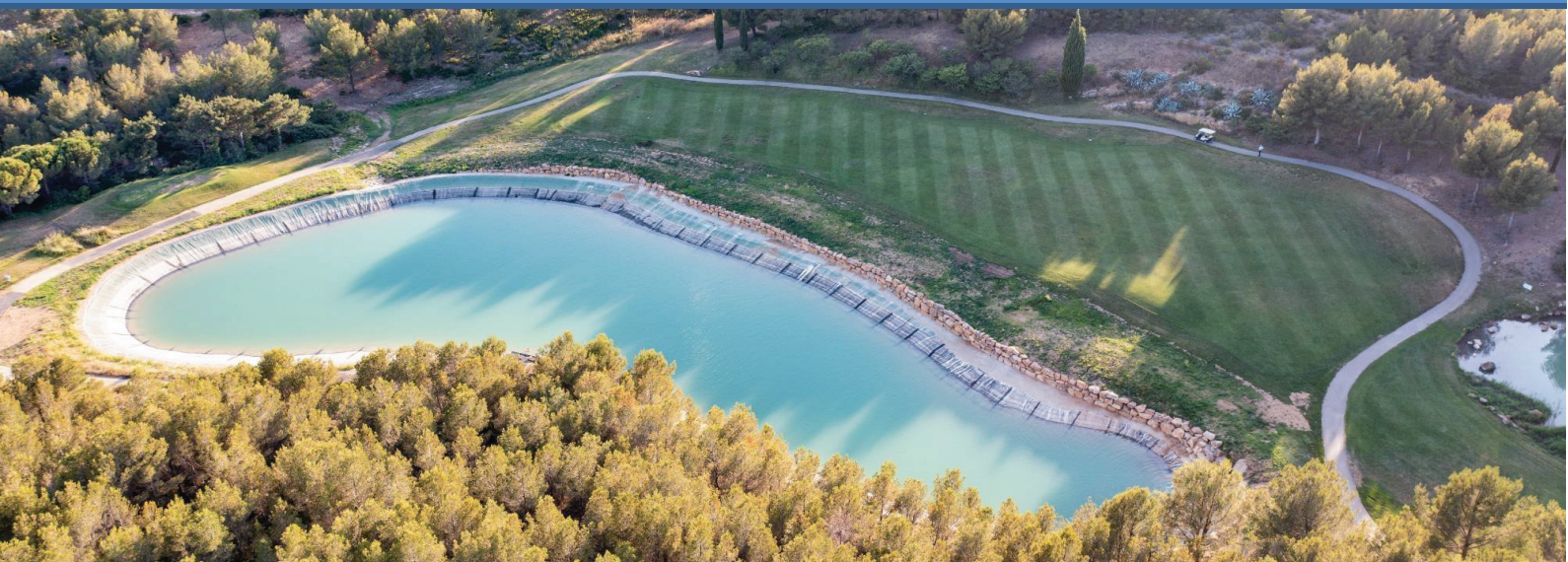
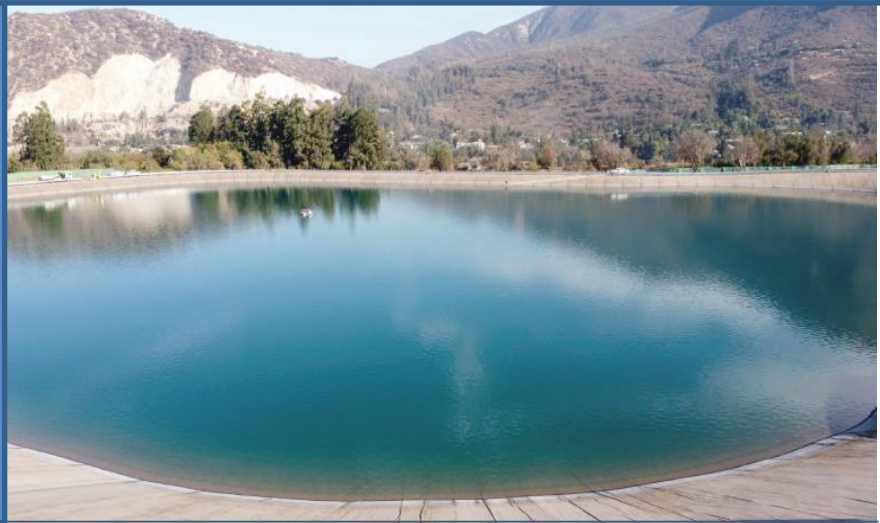


BASINS

Large and small leisure pools, fire reservoirs, fish farms, drinking water reserves

Thanks to its resistance, flexibility and compatibility with drinking water, BGM is ideal for construction of hill reservoirs and basins for utility purposes (irrigation reservoirs, fish farms, drinking water machine supplies, artificial lakes and ponds, protection of dams for leisure ports, etc.).





Corporate Office

Unit. No. 502 & 503, 5th Floor, Emaar Capital Tower,
M.G. Road, Sector -26, Gurugram, Haryana -122002
Tel: +91-124 460 1968
info@yooil.co.in

yooil.co.in

